

# eSIM - Activation steps (for Android)

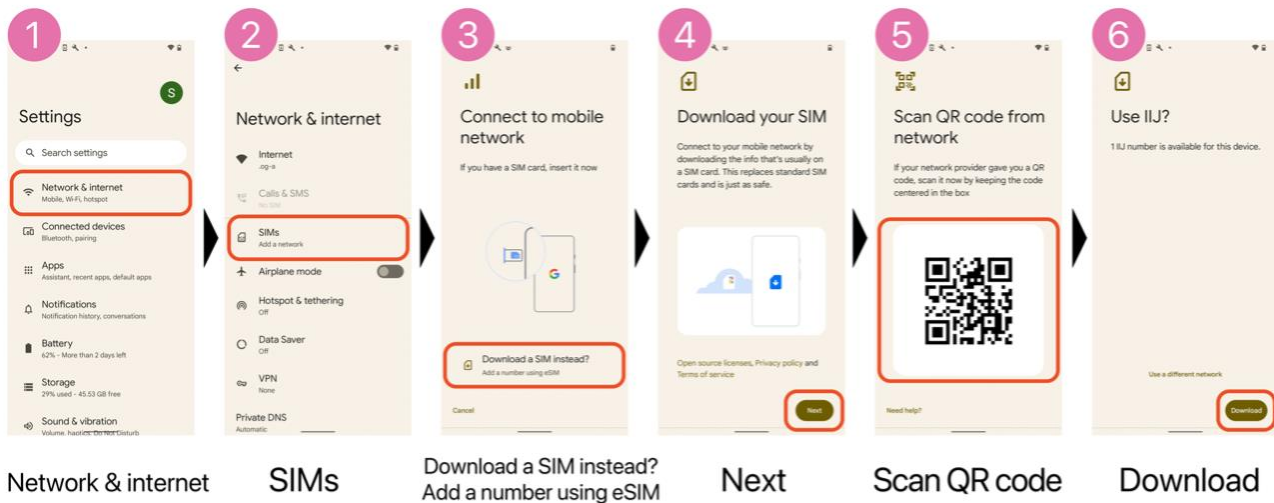
Please refer to the following steps and install the eSIM profile into your device.

## Important Notes Before You Install the eSIM Profile

- Data plan validity starts immediately when the eSIM is installed.
- To successfully install the eSIM, a stable Internet connection is required.
- The eSIM can only be installed once. **DO NOT DELETE/REMOVE** your eSIM from your device after the successful installation.

## Activation Steps

### 1. Install eSIM profile



### 2. **APN setting** [Link - APN SETTING PROCEDURE](#)

We noticed that some Android phones (Samsung Galaxy etc) need APN settings configured after installing the eSIM profile. Please check the link below and complete the APN settings if you cannot use data after you installed the eSIM profile.