

# eSIM - Activation steps (for iPhone)

Please refer to the following steps to install the eSIM profile into your device.

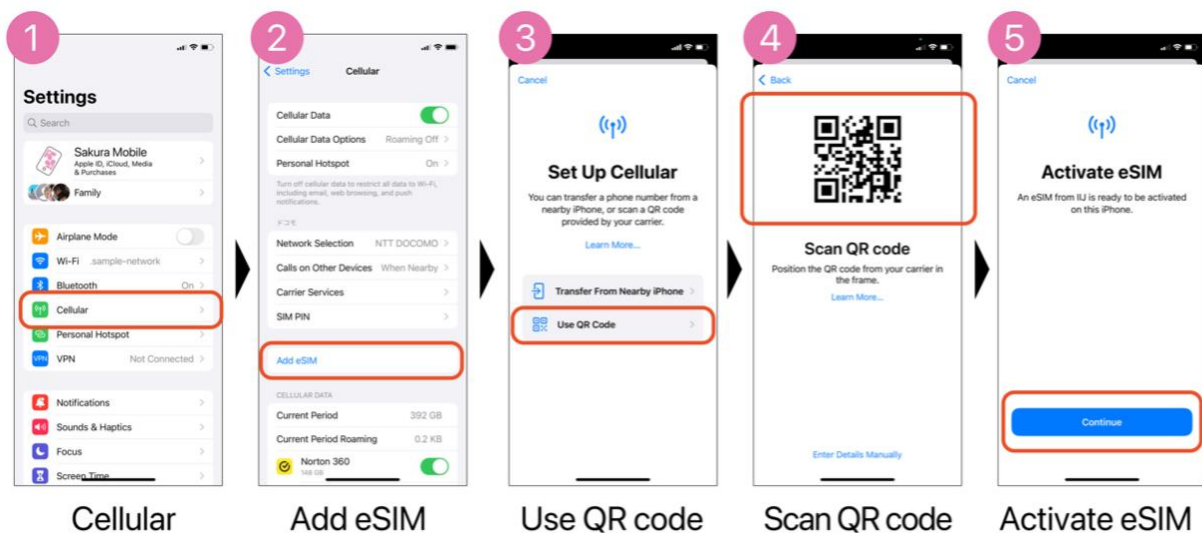
## Important Notes Before You Install the eSIM Profile

- Data plan validity starts immediately when the eSIM is installed.
- To successfully install the eSIM, a stable Internet connection is required.
- The eSIM can only be installed once. **DO NOT DELETE/REMOVE** your eSIM from your device after the successful installation.

## Activation Steps

**1. Turn OFF another eSIM (if you are currently using) and connect with WiFi**

**2. Install the eSIM profile**



If you cannot scan the QR code (in Step 4), please select “**Enter Details Manually**” and input the following information.

SM-DP address : [Please check “eSIM management page” from the link in Email](#)

Activation Code : [Please check “eSIM management page” from the link in Email](#)

## **3. Personal Hotspot setting**

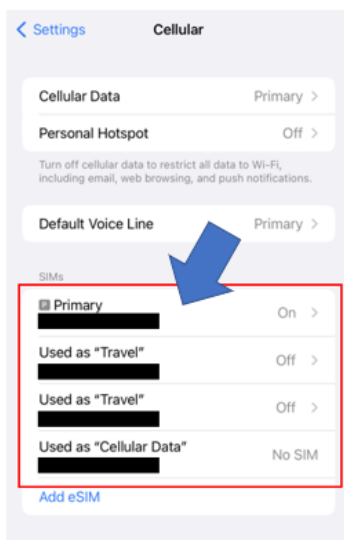
Please see the following steps to use the personal hotspot function.

→Please make sure to restart the phone after you complete the setting

## APN Values

APN	vmobile.jp
username	<a href="mailto:sakura@sakuramobile.jp">sakura@sakuramobile.jp</a>
password	sakura

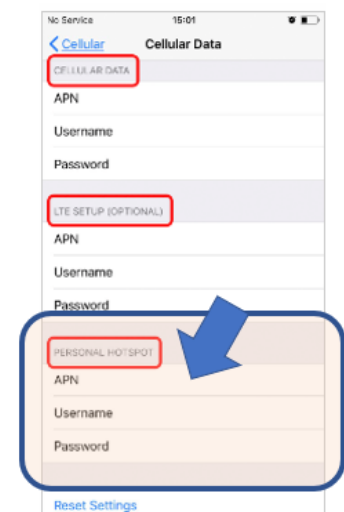
Setting>Cellular



Select our eSIM plan



Select "Cellular Data Network"



Input APN values in "Personal Hotspot section"